

The European Commission's science and knowledge service

Joint Research Centre

Territorial development and market access

An EU-wide outlook

Chris Jacobs-Crisioni
Carlo Lavalle



This presentation

Present LUISA – JRC’s tool to execute ex-ante evaluations of EU territorial policies

Focus on model’s capacity to provide current and future geographic contexts for regional development
- accessibility as a case

Explore potential linkages between geographic context and the evaluation of specialisation strategies

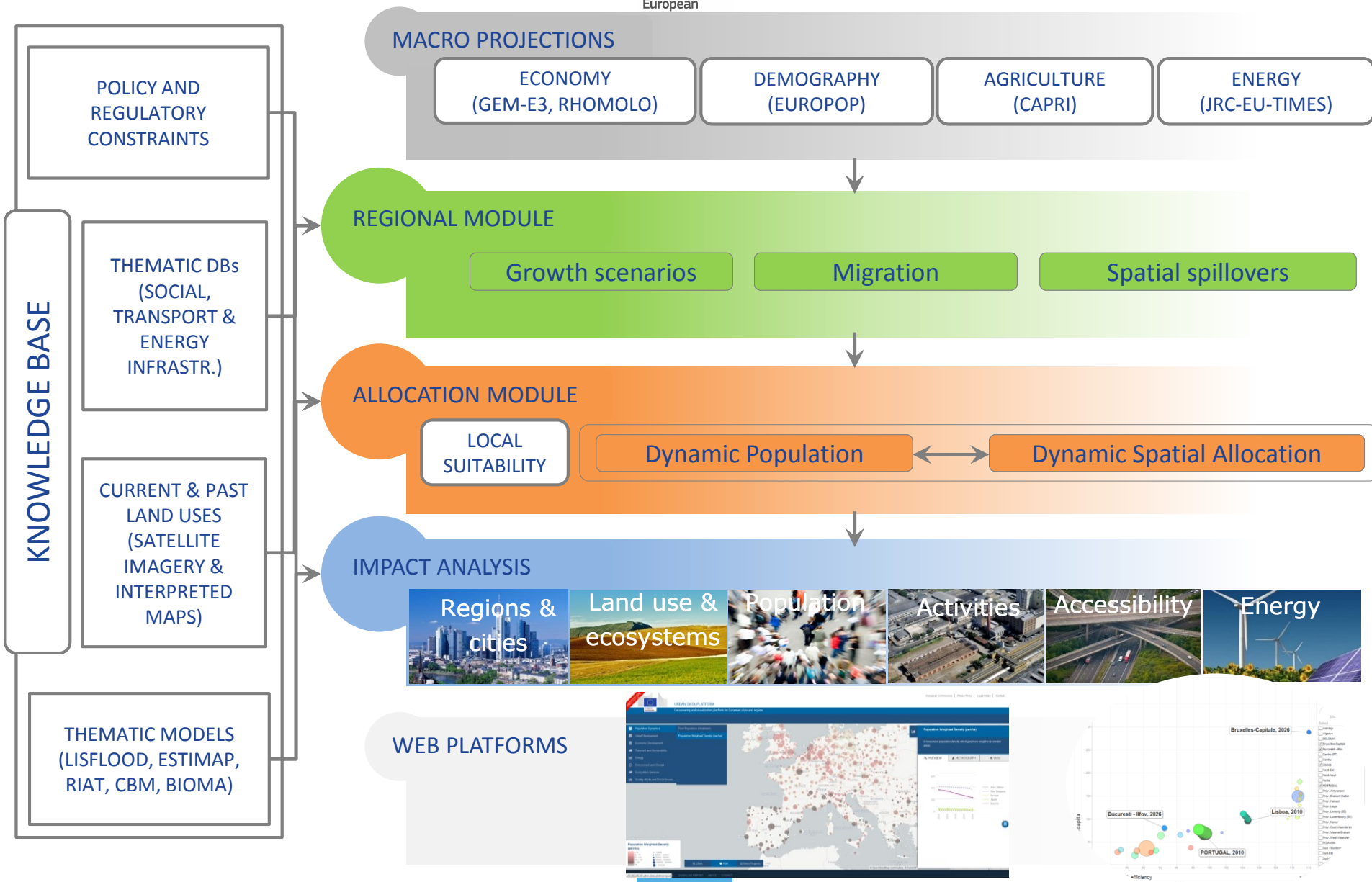
LUISA in the knowledge centre for territorial policy impacts

A modelling framework to evaluate the effects of territorial policies on social, economic and environmental domains

Centred around modelling the future spatial distribution of land functions, in 5-year intervals to 2050

50+ indicators

LUISA structure



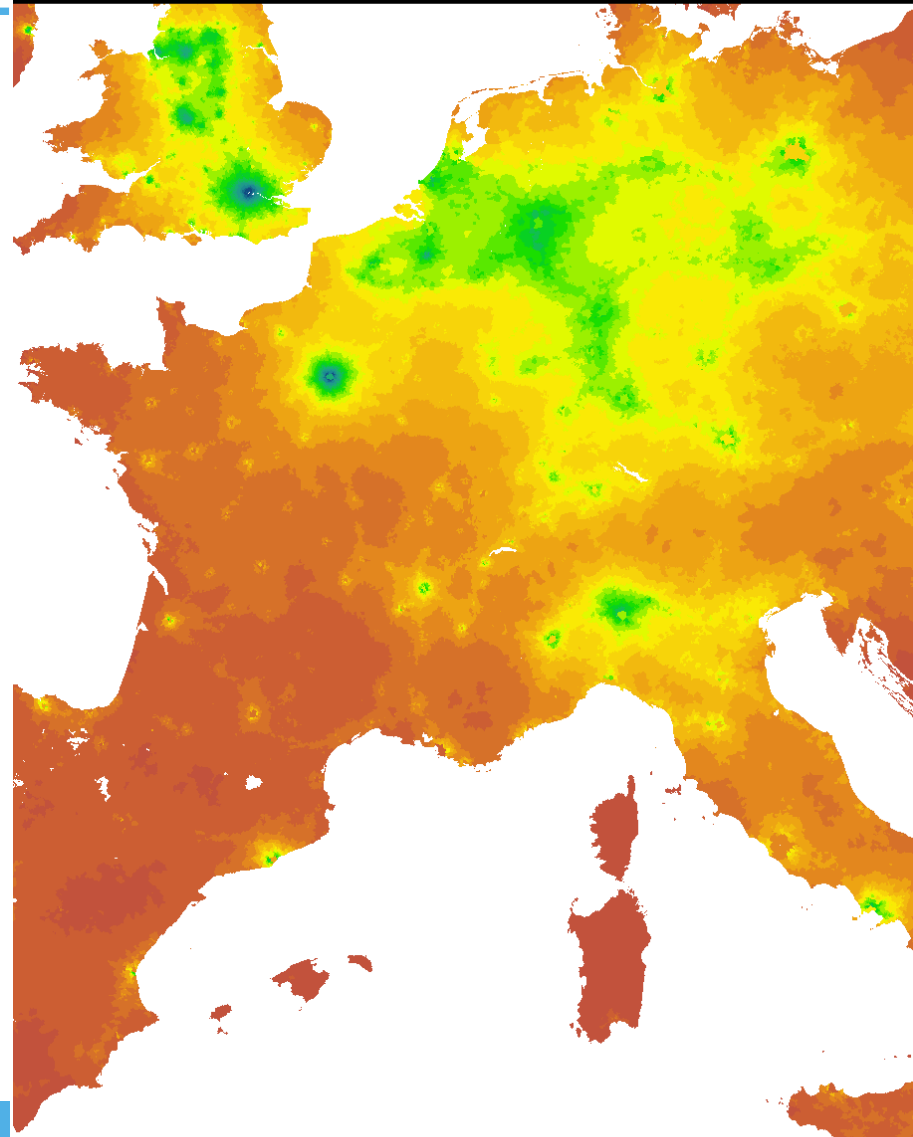
Potential accessibility (or market access)

Combines distribution of activities and transport costs

Repeatedly identified as a driving factor for growth

Increasing market access, increasing possibilities for economies of scale, agglomeration benefits

Empirical evidence: Percoco (2015), Koopmans et al. (2012), Jacobs-Crisioni and Koomen (forthcoming),



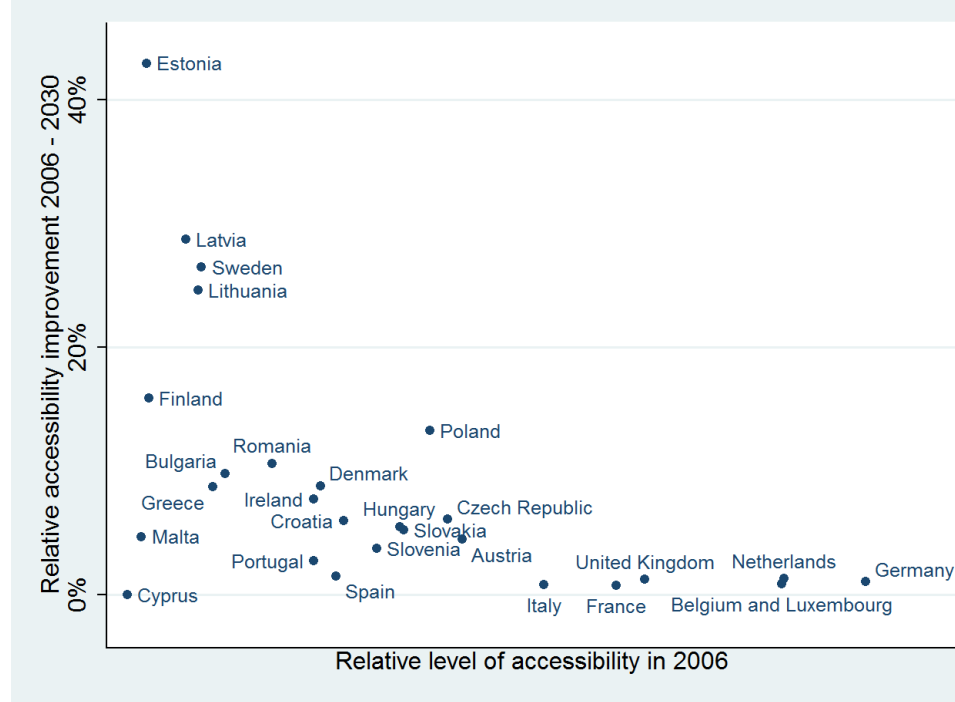


European Commission

Potential accessibility

LUISA output, endogenous population distributions and exogenous transport network improvements

Recent results effect on in-country accessibility disparities depends on local urbanization patterns



Modelled accessibility improvements due to known and simulated road network improvements

| Network | Modelled | | | | | | |
|-----------------------------|----------|-----------|------------------------|-------|-------------------|-------|------|
| | 2006 | 2030 | | | | | |
| Population | 2006 (I) | 2006 (II) | Compact scenario (III) | | BAU scenario (IV) | | |
| Coefficient of variation in | | % dif | | % dif | | % dif | |
| potential accessibility | 0.285 | 0.266 | -6.7 | 0.269 | -5.8 | 0.273 | -4.3 |

Jacobs-Crisioni et al. (2016) Accessibility and territorial cohesion in a case of transport infrastructure improvements with changing population distributions. ETRR 8(9)

Forecasts and strategy formulation

Currently, the specialization debate seems centred on governance structures, strategy formulation

Towards practical evaluation...

How does geographic context fit into territorial development plans?

Is market access a limiting factor for regional strategies?

Thanks

Chris Jacobs-Crisioni and Carlo Lavalle
christiaan.jacobs@ext.jrc.ec.europa.eu

https://www.researchgate.net/profile/Chris_Jacobs-Crisioni

Stay in touch



EU Science Hub:
ec.europa.eu/jrc



Facebook:
EU Science Hub – Joint Research Centre



Twitter:
@EU_ScienceHub



LinkedIn:
Joint Research Centre



YouTube:
EU Science Hub